

SWT-2000

Ultra-Small Ware Transfer

Stability Precision Control

Technical Specification

Model

SWT-2000

Overall weight

Approx. 53kg

Operating speed range

600 containers per minute

Finger spacing options

32 fingers at 2¹/₄" spacing

24 fingers at 3" spacing

16 fingers at 4¹/₂" spacing

12 fingers at 6" spacing

Container size limits

2¹/₄" spacing - 26mm max

3" spacing - 35mm max

4¹/₂" spacing - 52mm max

6" spacing - 52mm wide x 70mm long

Drive requirements

Standard Sheppee transfer

drive or equivalent

Service requirements

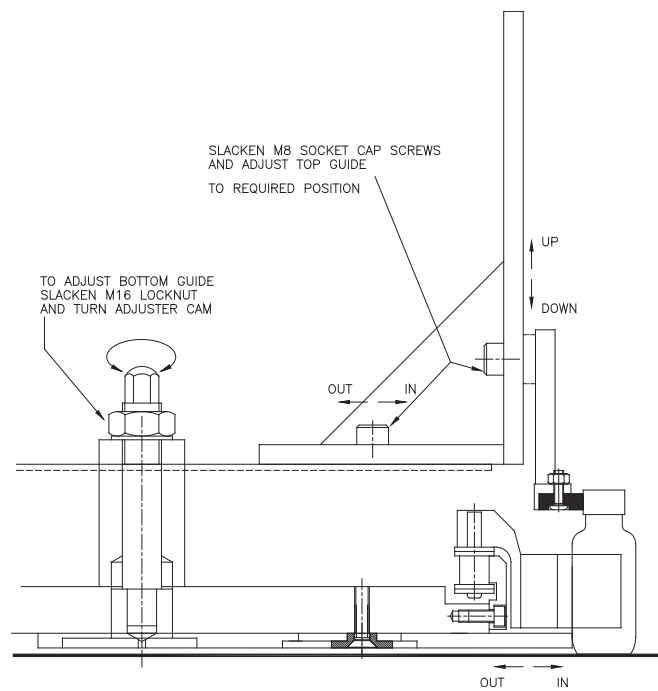
Connection to centralised

Lincoln lubrication system



Features and Benefits

- Designed specifically for unstable small ware containers
- Four finger spacing configurations
- 'Quick-change' fingers
- Adjustable top and bottom wareguides
- Spacing reduced by 40% through the transfer
- Reduced job set up time
- Enhanced container stability
- Reliable cross conveyor spacing
- Minimal spares holding required
- Consistent ware handling at all speeds
- Transfers containers from 20mm diameter to 70mm diameter



Brief customer reference list

- Zignago Vetro – Italy
- Saint Gobain Mers – France
- Heinz – Germany
- Sotancro – Portugal
- Maktab – Iran
- HNG – India
- Yashima – Japan
- Emhart – China
- Stolze Oberglas – Germany
- Saint Godain Vidros – Brazil
- Saver Glass – France
- Wisthoff – Germany
- Gujarat Glass – India
- Gerresheimer – USA
- Sisecam – Turkey
- Beatson Clark – Great Britain
- OI Peldar - Colombia