

Tri-Flex

3 Axis High Speed Servo Lehr Loader

Stability Precision Control

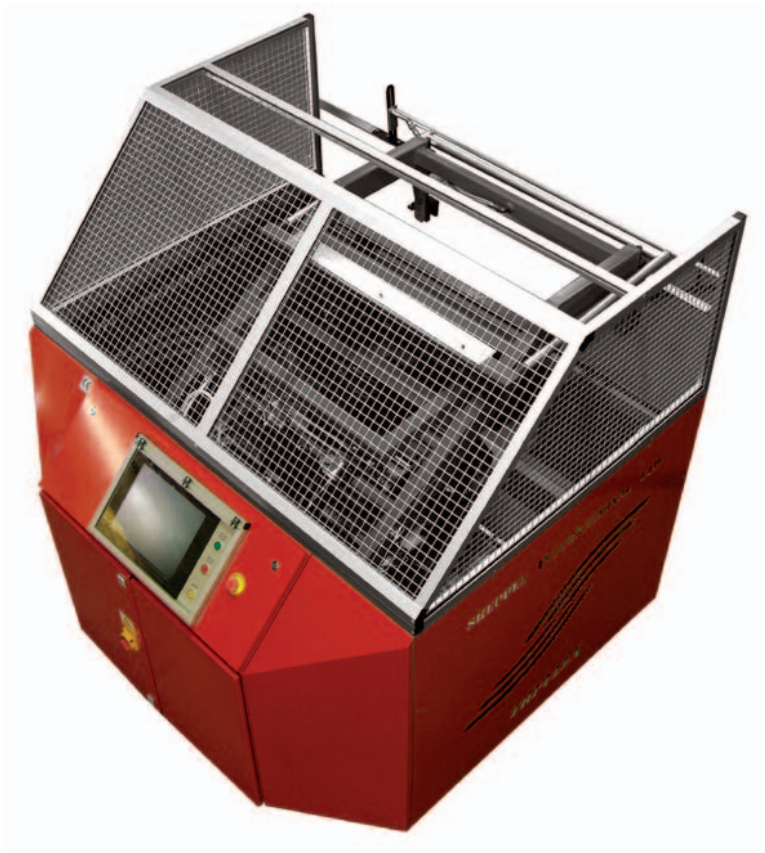
Technical Specification

Model
Tri-Flex

Overall weight
Approx. 800kg

Operating speed range
0.5 - 20+ cycles per minute

Controller type
Servo drives with integrated motion control

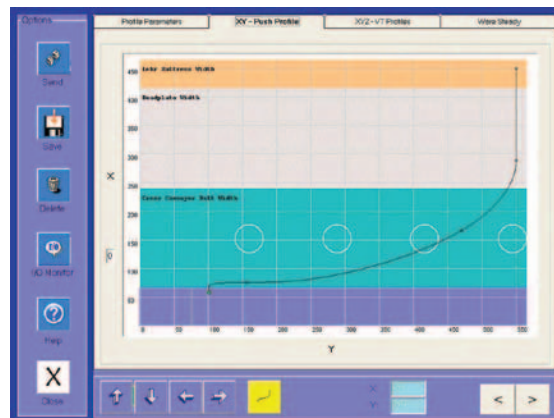


Features and Benefits

- Fully programmable pushbar motion
- Easy to use 15" touch screen interface
- Microsoft® Windows Operating System utilising latest Pentium 4 Processor & Flash Memory Media
- Full job storage and on line editing facility
- Easy, accessible user help files
- Staggered stack & bottle sort facility
- Ware reject control
- Built in operating manual, parts & assembly drawings
- Integral control panel & cooling system
- 3 identical brushless AC servomotors
- Minimum moving parts
- Fully adjustable waresteady assembly with on line electrical adjustments

Available Options

- Fully automated Ware Steady Mechanism.
- Mounting Rails for easy removal and access
- 4th Axis Drive, to drive cross conveyor
- Full 6 Axis Drive Capability. To drive X,Y & Z axis on stacker plus Cross Conveyor transfer unit and I.S. Machine Conveyor
- Slim-line version for restricted areas
- Remote access. Real time contact with Sheppey International
- Networking capability



Brief customer reference list

- Sisecam (Turkey)
- Barbosa & Almeida (Portugal)
- Boscato & Dalla Fontana, (Italy)
- Consol (South Africa)
- Fevisa (Mexico)
- Heinz Glass (Germany)
- Redfearn Glass (UK)
- Saint Gobain, Covington (USA)
- Saint Gobain, Mers (France)
- Saint Gobain, Sital (Russia)
- Santos Barosa (Portugal)
- Sergiev Possad (Russia)
- Stolze Oberglas (Austria)
- Zignago Vetro (Italy)